

hicazkâr

Çorlununun

al di be ni al di be ni i ki kâz m a



si a man a man

si

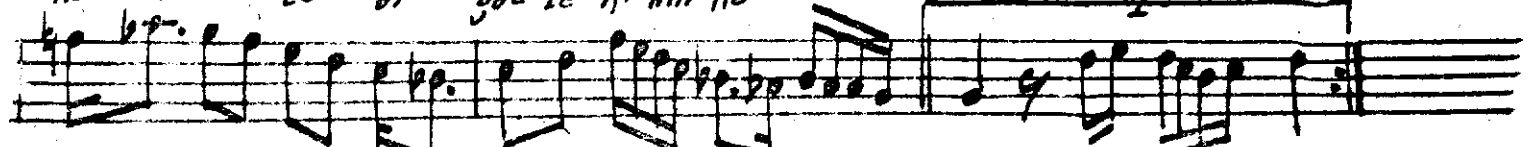
yâk di

be ni



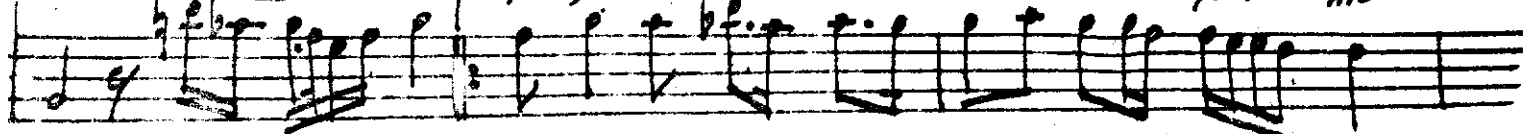
Kül ey le di göz le ri nin Ka Ra

si



si i şî air de ta bip

yâk mu



ne dir bu nun ça

Re

si Fa man

si



sev dim ne ça Re ne söy le sem a ya Re

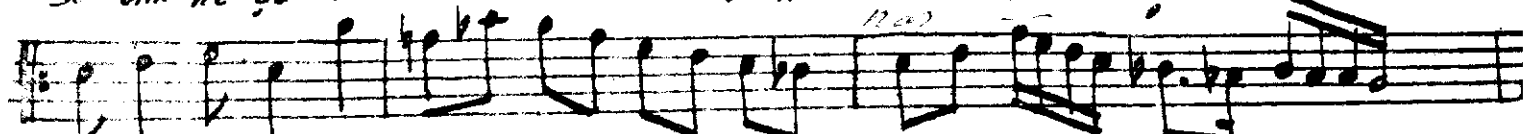
Re

ler

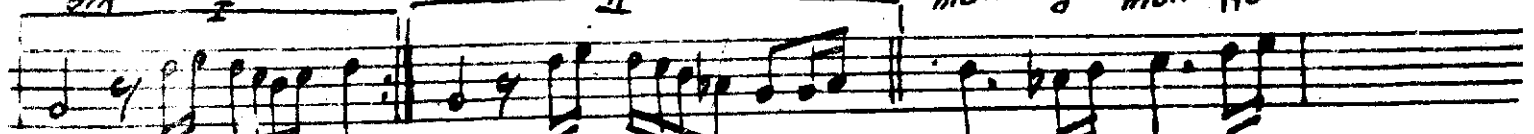
mim

oş

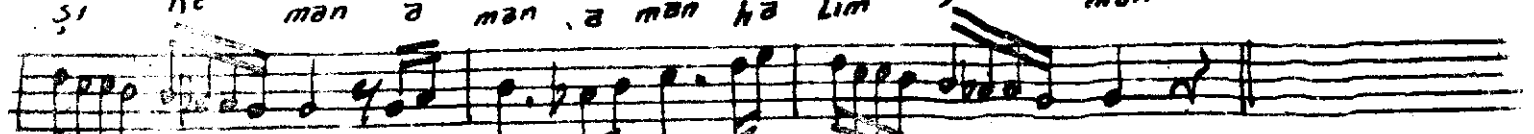
Lip



dir dir a man a man Ka



si Ke man a man a man ha Lim ya man



ev bakarsmî güzel gözliin sende bane yarmsın
bir bakıla aklmı aldın akil baktı kormusun
Bahmı şukat otmeyüp te sen hana kuyarmısın
Sendim ne care

İsmail Hoca